

# Installing Galaxy Custom Designer™

---

Version 2009.06, June 2009

**SYNOPSYS®**

# Copyright Notice and Proprietary Information

Copyright © 2009 Synopsys, Inc. All rights reserved. This software and documentation contain confidential and proprietary information that is the property of Synopsys, Inc. The software and documentation are furnished under a license agreement and may be used or copied only in accordance with the terms of the license agreement. No part of the software and documentation may be reproduced, transmitted, or translated, in any form or by any means, electronic, mechanical, manual, optical, or otherwise, without prior written permission of Synopsys, Inc., or as expressly provided by the license agreement.

## Right to Copy Documentation

The license agreement with Synopsys permits licensee to make copies of the documentation for its internal use only. Each copy shall include all copyrights, trademarks, service marks, and proprietary rights notices, if any. Licensee must assign sequential numbers to all copies. These copies shall contain the following legend on the cover page:

“This document is duplicated with the permission of Synopsys, Inc., for the exclusive use of \_\_\_\_\_ and its employees. This is copy number \_\_\_\_\_.”

## Destination Control Statement

All technical data contained in this publication is subject to the export control laws of the United States of America. Disclosure to nationals of other countries contrary to United States law is prohibited. It is the reader's responsibility to determine the applicable regulations and to comply with them.

## Disclaimer

SYNOPSYS, INC., AND ITS LICENSORS MAKE NO WARRANTY OF ANY KIND, EXPRESS OR IMPLIED, WITH REGARD TO THIS MATERIAL, INCLUDING, BUT NOT LIMITED TO, THE IMPLIED WARRANTIES OF MERCHANTABILITY AND FITNESS FOR A PARTICULAR PURPOSE.

## Registered Trademarks (®)

Synopsys, AMPS, Astro, Behavior Extracting Synthesis Technology, Cadabra, CATS, Certify, CHIPit, Design Compiler, DesignWare, Formality, HDL Analyst, HSIM, HSPICE, Identify, iN-Phase, Leda, MAST, ModelTools, NanoSim, OpenVera, PathMill, Physical Compiler, PrimeTime, SCOPE, Simply Better Results, SiVL, SNUG, SolvNet, Syndicated, Synplicity, the Synplicity logo, Synplify, Synplify Pro, Synthesis Constraints Optimization Environment, TetraMAX, UMRBus, VCS, Vera, and YIELDirector are registered trademarks of Synopsys, Inc.

## Trademarks (™)

AFGen, Apollo, Astro-Rail, Astro-Xtalk, Aurora, AvanWaves, BEST, Columbia, Columbia-CE, Confirma, Cosmos, CosmosLE, CosmosScope, CRITIC, CustomSim, DC Expert, DC Professional, DC Ultra, Design Analyzer, Design Vision, DesignerHDL, DesignPower, DFTMAX, Direct Silicon Access, Discovery, Eclipse, Encore, EPIC, Galaxy, Galaxy Custom Designer, HANEX, HAPS, HapsTrak, HDL Compiler, Hercules, Hierarchical Optimization Technology, High-performance ASIC Prototyping System, HSIM<sup>plus</sup>, i-Virtual Stepper, IICE, in-Sync, iN-Tandem, Jupiter, Jupiter-DP, JupiterXT, JupiterXT-ASIC, Liberty, Libra-Passport, Library Compiler, Magellan, Mars, Mars-Rail, Mars-Xtalk, Milkyway, ModelSource, Module Compiler, MultiPoint, Physical Analyst, Planet, Planet-PL, Polaris, Power Compiler, Raphael, Saturn, Scirocco, Scirocco-i, Star-RCXT, Star-SimXT, System Compiler, System Designer, Taurus, TotalRecall, TSUPREM-4, VCS Express, VCSi, VHDL Compiler, VirSim, and VMC are trademarks of Synopsys, Inc.

## Service Marks (sm)

MAP-in, SVP Café, and TAP-in are service marks of Synopsys, Inc.

SystemC is a trademark of the Open SystemC Initiative and is used under license.

ARM and AMBA are registered trademarks of ARM Limited.

Saber is a registered trademark of SabreMark Limited Partnership and is used under license.

All other product or company names may be trademarks of their respective owners.

---

## Installing Custom Designer

---

This document contains specific information to prepare for and verify installation of Custom Designer, as well as links to installation instructions.

The installation instructions in this document are the most up-to-date instructions available at the time of production. However, changes might have occurred. For the latest installation information, see the product release notes or documentation.

This document contains the following sections:

- [Media Availability and Supported Platforms](#)
- [Disk Space Requirements](#)
- [Installing the Software](#)
- [Setting Up the User Environment](#)
- [Verifying the Custom Designer Installation](#)
- [Accessing Custom Designer Documentation](#)

---

### Media Availability and Supported Platforms

The Custom Designer tool is available on CD or by EST. Obtain the appropriate binary executable files based on the operating system you need. Table 1 shows the supported platforms for the C-2009.06 release.

*Table 1 Supported Platforms and Keywords*

Platform	Operating system	Synopsys platform keyword	Window environment
AMDOpteron	Red Hat Enterprise Linux v4, 5	amd64 (64-bit mode)	GNOME
IA-32 (X86)	Red Hat Enterprise Linux v4, 5	linux (32-bit mode)	GNOME

The Custom Designer software is configured so that multiple platforms of this version can be installed in a single installation directory (*install\_dir*). See [Specifying the Custom Designer Platform Version](#) for more information.

---

## Disk Space Requirements

Make sure you have enough disk space for Custom Designer installation. For a full installation on one platform, 450 MB is recommended. The disk space requirement varies depending on the platform and the tool selected for installation. Table 2 shows the maximum space required for installing each product on a particular platform.

*Table 2 Disk Space Requirements (in Megabytes)*

Operating system	.tar File	Installed Space
Platform-independent files (Base MB)	36	104
AMD 64-bit	234	392
Red Hat Linux 32-bit	234	382

---

## Installing the Software

Custom Designer uses the Synopsys Installer tool, which allows you to use a graphical user interface (GUI) or a text script. For information about downloading Synopsys Installer and Custom Designer, see *Installing Synopsys Tools*, available at [http://www.synopsys.com/support/installation/install\\_guide.html](http://www.synopsys.com/support/installation/install_guide.html).

To install Custom Designer by EST or from the CD, follow the procedures described in *Installing Synopsys Tools*.

**Note:**

Synopsys tools should be installed by your CAD team.

*Installing Synopsys Tools* shows an example Synopsys media installation script for the synthesis tools. Custom Designer is installed in a similar manner.

Custom Designer is a stand-alone product and cannot be installed over an existing Synopsys product. You can either create a new directory for Custom Designer yourself or you can let the installer create the directory.

### Caution!

Although Custom Designer can be installed over a prior version of Custom Designer, the results are unpredictable.

---

## Setting Up the User Environment

Refer to the following sections to set up your user environment:

- [Specifying the Executable File Location](#)
- [Setting the SNPSLMD\\_LICENSE\\_FILE or LM\\_LICENSE\\_FILE Environment Variable](#)
- [Specifying the Custom Designer Platform Version](#)

---

### Specifying the Executable File Location

Add the Custom Designer directory containing the executable file to the `PATH` environment variable.

If you are using the C shell, add the following line to the `.cshrc` file:

```
set path=(install_dir/bin $path)
```

If you are using the Bourne, Korn, or Bash shell, add the following line to the `.profile` or `.kshrc` file:

```
PATH=install_dir/bin:$PATH  
export PATH
```

---

### Setting the SNPSLMD\_LICENSE\_FILE or LM\_LICENSE\_FILE Environment Variable

Before you can verify the Custom Designer installation, you must install the SCL software and define either the `SNPSLMD_LICENSE_FILE` or the `LM_LICENSE_FILE` variable.

## Installing Custom Designer

### Verifying the Custom Designer Installation

The installer looks for these variables in the following order and uses whichever is found first, ignoring the rest:

- `$HOME/.flexlmrc`
- `SNPSLMD_LICENSE_FILE`
- `LM_LICENSE_FILE`

For information about downloading and installing SCL and on setting the license variable, see [Installing Synopsys Tools](#).

---

## Specifying the Custom Designer Platform Version

In the case of multiple versions of Custom Designer having been installed in the same directory, you can use the `SYNOPTSYS_CUSTOM_PLATFORM` variable to specify which Custom Designer platform version you want to use, as shown in the following example:

```
setenv SYNOPTSYS_CUSTOM_PLATFORM [linux | amd64]
```

---

## Verifying the Custom Designer Installation

To verify the Custom Designer installation,

1. Make sure you are in a directory where you have read/write privileges.

```
% cd $HOME
```

2. Invoke the tool by entering

```
% cdesigner -help
```

If you see information about the product version, production date, and copyright, the installation was successful.

---

## Accessing Custom Designer Documentation

The documentation for Custom Designer is available as PDF files or as online help as described in the following sections:

- [Viewing and Printing Custom Designer Documentation in Portable Document Format](#)
- [Supported Web Browsers](#)
- [Setting MIME Types to View PDFs from Help](#)

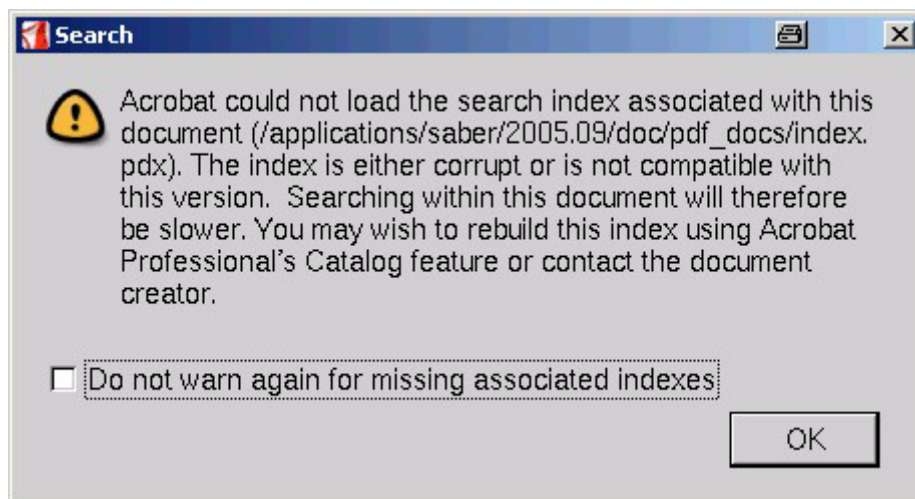
---

### Viewing and Printing Custom Designer Documentation in Portable Document Format

To view and print Custom Designer documentation in PDF, you must have Adobe Acrobat Reader installed on your machine.

### Adobe Reader Full-Text Search Issue on UNIX

When you do a full-text search of Custom Designer documentation on UNIX operating systems, you might see the following error message:



The file mentioned in the message, `index.pdx`, is a full-text search index that lets you search a collection of manuals shipped with your release. This message appears when your version of Adobe Reader cannot use the version of the full-text search index provided.

## Installing Custom Designer

### Accessing Custom Designer Documentation

You can use Custom Designer documentation without the full-text search feature. All other features, including searches within a single document, still work. The only task you will not be able to do is to search more than one document in the collection.

Table 3 shows which version of Adobe Reader you need to use with a particular release. It also indicates whether full-text search is available for a particular platform and release.

*Table 3 Platform and Supported Version*

<b>Platform</b>	<b>Product documentation version</b>	<b>Full-text search available</b>	<b>Adobe Reader version</b>
IBM RS/6000 (AIX)	Y-2006.03, Y-2006.06 or later	No	Adobe Reader 5.0 or earlier
	X-2005.12 or earlier	Yes	Adobe Reader 5.0 or earlier
Linux	Y-2006.03, Y-2006.06 or later	Yes	Adobe Reader 7.0
	X-2005.12 or earlier	No	Any version
Sun SPARC (Solaris) <sup>1</sup>	Y-2006.03, Y-2006.06 or later	Yes	Adobe Reader 7.0
	X-2005.12 or earlier	Yes	Adobe Reader 5.0 or earlier
Windows	Y-2006.03, Y-2006.06 or later	Yes	Adobe Reader 6.0 or 7.0
	X-2005.12 or earlier	Yes	Any version

*1. On Solaris operating systems, the GNOME desktop manager must be installed to support Adobe Reader 7.0.*

For detailed information, see SolvNet article 017761, “An Error Message Appears When Doing a Full-text Search of Synopsys Product Documentation.”

---

## Supported Web Browsers

To view this Help system, Synopsys recommends the following web browsers on the Synopsys-supported platforms:

Platform	Operating Systems	Supported Browsers
X86 (IA-32) 32-bit & Linux 32-bit	RedHat Enterprise Linux 4 or 5	Firefox 1.5, 2.0, 3.0 <sup>1</sup> Mozilla 1.7 Netscape Navigator 7.0
X86_64 Linux 64-bit	Red Hat Enterprise Linux 4 or 5	Firefox 1.5, 2.0, 3.0 <sup>1</sup> Mozilla 1.7 Netscape Navigator 7.0

---

1. Synopsys recommends using Firefox 3.0 builds 2008052912 or later on Linux.

## How to Set a Default Browser on UNIX or Linux

The Help system searches for HTML browsers on UNIX or Linux systems as follows:

1. Searches for the browser associated with the Synopsys Help browser variable, `SNPS_BROWSER`. The value is a browser executable with full pathname.
2. Searches for the browser associated with the UNIX system variable, `BROWSER`. The value is a browser executable with full pathname.
3. *Optional:* Searches for the browser associated with a preference or other command setting provided by your Synopsys application.
4. Searches for the following browser executables, in order, in your `PATH`:

```
firefox  
seamonkey  
netscape6  
netscape  
mozilla  
iexplorer  
konqueror  
epiphany
```

5. Searches for the executables in each of the following locations in order:  
For `firefox` and then for `seamonkey`:

## Installing Custom Designer

### Accessing Custom Designer Documentation

```
/opt/browser/  
/usr/bin/  
/usr/bin/browser  
/usr/local/browser  
/usr/local/bin/  
/usr/local/bin/browser/
```

For netscape6, then for netscape, and then for mozilla:

```
/opt/browser/  
/usr/local/bin/  
/usr/local/browser  
/usr/bin/browser/  
/usr/dt/bin
```

For iexplorer:

```
/usr/local/microsoft/bin
```

For konqueror and then for epiphany:

```
/opt/browser/  
/usr/bin/  
/usr/bin/browser  
/usr/local/browser  
/usr/local/bin/  
/usr/local/bin/browser/
```

To set the default browser, you can do either of the following:

- Use the appropriate UNIX or Linux command to set one of the variables described above. For example, in UNIX csh shell or LINUX BSD:

```
setenv SNPS_BROWSER /usr/bin/firefox
```

In UNIX or Linux sh, bash, or ksh:

```
export SNPS_BROWSER=/usr/bin/firefox
```

- Use your Synopsys application's preference setting or command, if any, to set the default. The preference setting or command name varies between applications. Some applications do not provide this setting, but rely on the variables described previously. Check your application documentation for information about setting a default Help browser.

## Setting MIME Types to View PDFs from Help

Online Help includes PDF versions of the documents, for use in printing. In order for links from the Help to the PDF to work, you must set an association in your browser for MIME type "application/pdf" with an appropriate PDF viewer for your platform. See the documentation for your particular browser for specific instructions on creating MIME-type associations.

**Installing Custom Designer**  
Accessing Custom Designer Documentation